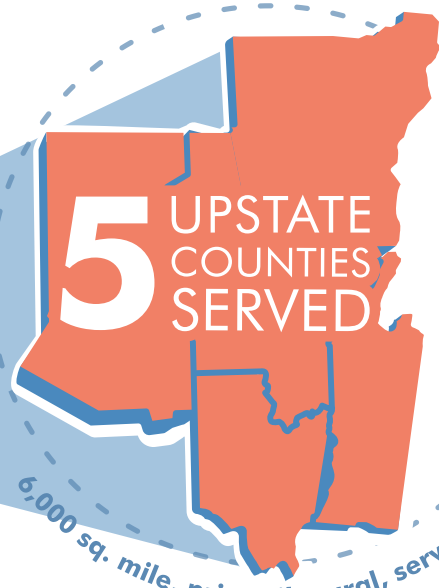
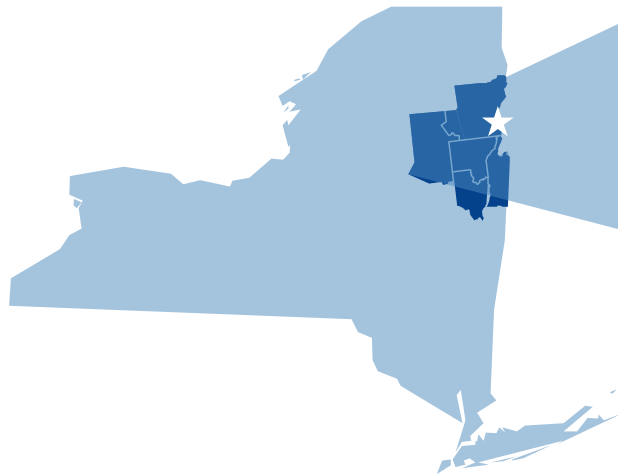




## 20 REGIONAL LOCATIONS



6,000 sq. mile, primarily rural, service area



## 2,300 EMPLOYEES

# 700+

**NURSES & NURSE PRACTITIONERS**

# 200+

**CERTIFIED NURSES**

PROUD TO ACHIEVE  
**MAGNET<sup>®</sup> RECOGNITION**  
FOR NURSING EXCELLENCE



RN *satisfaction* SCORES **OUTPERFORM** THE NATIONAL AVERAGE



WE *encourage* CONTINUING EDUCATION AND *support* **RN CERTIFICATIONS**



## CLINICAL LADDER

PROFESSIONAL ADVANCEMENT

## TUITION REIMBURSEMENT

— —  
EDUCATIONAL **STIPEND**

Annually\*

# 1,110

BABIES BORN

— **IN THE** —  
**JOYCE STOCK SNUGGERY**

**38,600**  
E.D. VISITS

# 11,050

INPATIENT DISCHARGES

# 9,150

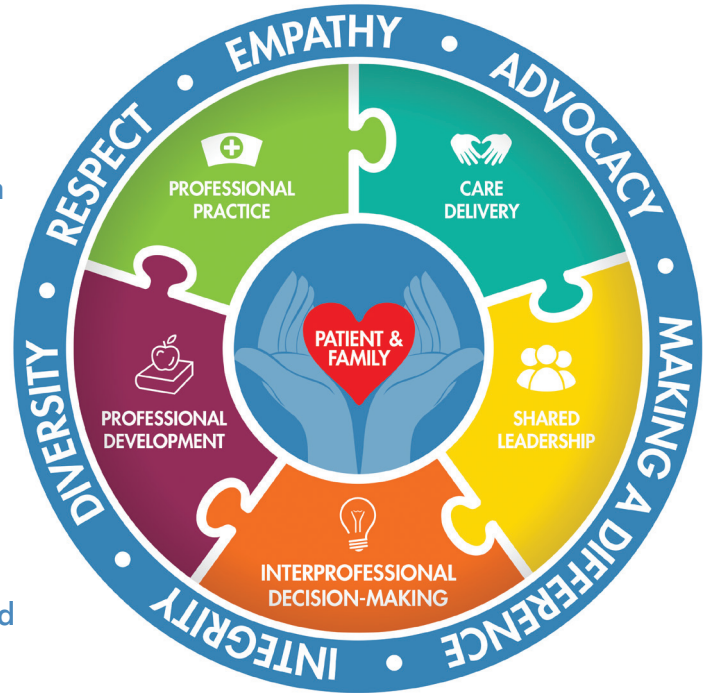
SURGERIES PERFORMED

\*NUMBERS BASED ON 2020 CALENDAR YEAR

Updated 6/2021

## About Us

Founded in 1897, Glens Falls Hospital today operates an advanced healthcare delivery system. Our mission is to improve the health of people in our region by providing access to exceptional, affordable and patient-centered care, every day and in every setting. It is the belief of the professional nursing staff that every patient and family has the right to holistic, compassionate, competent, ethical, quality healthcare throughout all stages of illness and health. The quality of that nursing care is enhanced by community involvement, continuing education, fiscal responsibility and evidence-based practice to improve outcomes across the continuum of care. For more information about Nursing careers at Glens Falls Hospital, visit: [www.GlensFallsHospital.org/Nursing](http://www.GlensFallsHospital.org/Nursing).



## Nursing Opportunities Available in:

### HOSPITAL PROGRAMS & SERVICES

- Breast Center
- Cardiac Care
- Case Management
- C.R. Wood Cancer Center Services
- Emergency Department
- Gastroenterology (GI) Center
- Infusion Center
- Inpatient Services:
  - Critical Care
  - Behavioral Health
  - Joyce Stock Snuggery/Maternity
  - Medical/Surgical
- Interventional Radiology
- Medical Imaging



- Obstetrics & Gynecology
- Stroke Center

### OUTPATIENT PROGRAMS & SERVICES

- Center of Excellence for Alzheimer's Disease
- Community Care Coordination
- Medical Imaging
- Wound Healing Center

### PHYSICIAN PRACTICES

- Adirondack Cardiology
- Adirondack ENT
- Glens Falls Neurology
- Orthopedic Specialists of Glens Falls Hospital



- Primary Care:
  - Cambridge Medical Center & Urgent Care
  - Evergreen Medical Center
  - Granville Medical Center
  - Greenwich Medical Center
  - Hudson Falls Medical Center
  - Salem Medical Center
  - Whitehall Medical Center
  - Wilton Medical Center
- Surgical Specialists of Glens Falls Hospital
  - General Surgery
  - Thoracic
  - Urology



For more information visit:  
[www.GlensFallsHospital.org/Nursing](http://www.GlensFallsHospital.org/Nursing)